

UNIFIED SCHOOL DISTRICT 434

OVERBROOK ATTENDANCE CENTER

PROJECT 1806-01: ENTRANCE

PROJECT CONSULTANTS:

ARCHITECT: PEARSON ARCHITECTURE STUDIO
OSAGE CITY, KS
BOBBI@PEARSON-STUDIO.COM
785-220-6898

ENGINEER: LATIMER SOMMERS AND ASSOCIATES PA
TOPEKA, KS
785-233-3232
WBASSETTE@LSAPA.COM

SECURITY: PER SEPARATE CONTRACT FOR CONTRACTOR COORDINATION

DRAWING INDEX:

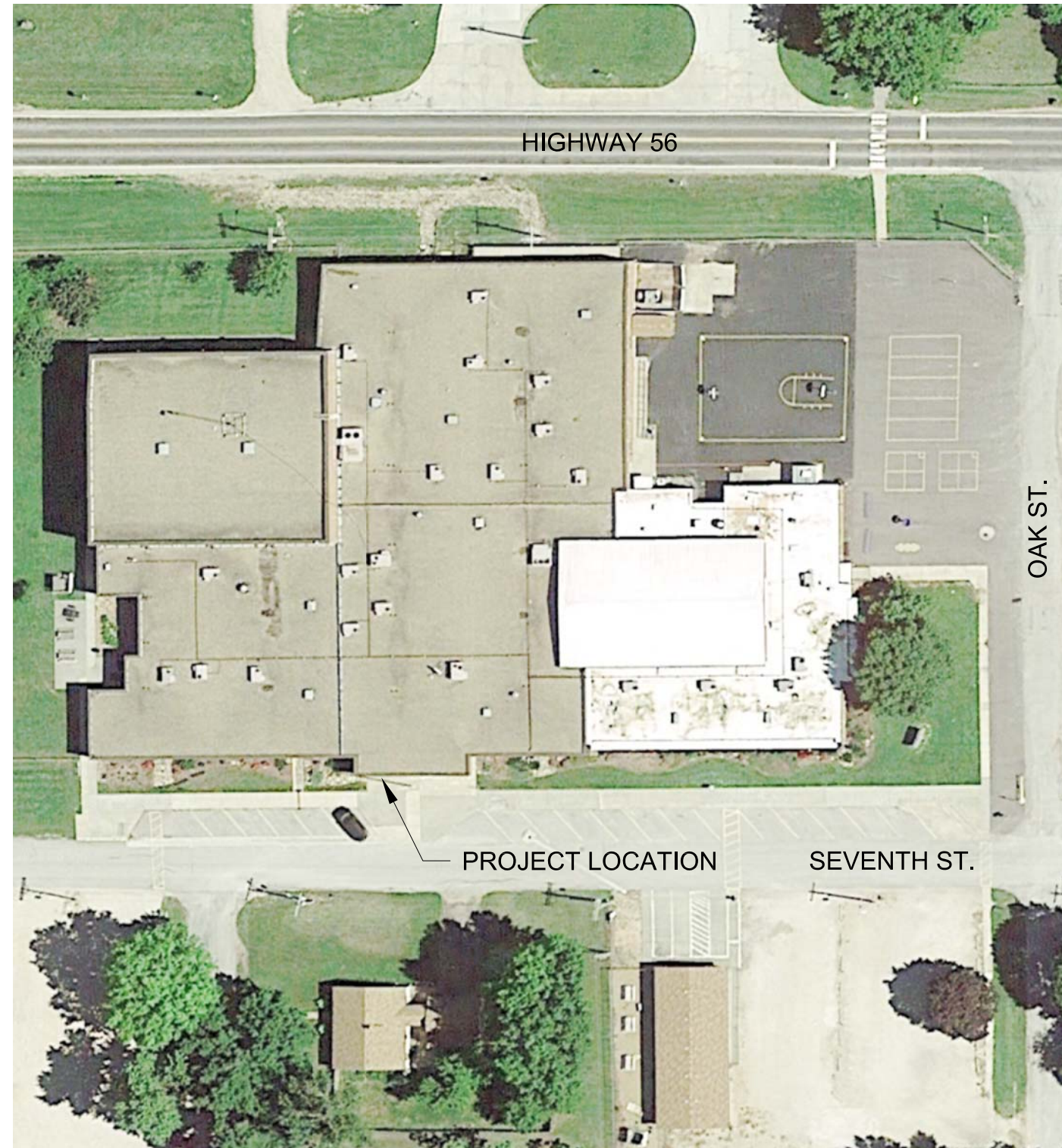
G1.0 GENERAL INFORMATION
G2.0 EXISTING CONDITIONS PHOTOS
G2.1 EXISTING CONDITIONS PHOTOS
D1.0 DEMOLITION PLAN
A1.0 FLOOR PLAN
A2.0 REFLECTED CEILING PLAN
A3.0 DETAILS
E1.0 ELECTRICAL REFLECTED CEILING PLAN

PROJECT SCOPE:

OVERBROOK ATTENDANCE CENTER
INTERIOR DEMOLITION AND CONSTRUCTION TO DEFINE CONTROLLED ACCESS COMMUNICATING WITH, AND THROUGH, ADJACENT ADMINISTRATION OFFICE. NEW INTERIOR PARTITION WITH DOOR AND TRANSOM ASSEMBLY; REMOVAL OF EXISTING INTERIOR WINDOW AND CMU IN PREPARATION OF NEW RATED DOOR AND SIDELITE ASSEMBLY; AND ASSOCIATED MISC CONSTRUCTION PER PROJECT DRAWINGS AND SPECIFICATIONS.

GENERAL NOTES:

CONTRACTOR SHALL BE RESPONSIBLE FOR VERIFYING DIMENSIONS, DETAILS, MEANS AND METHODS IN CONSTRUCTION. DO NOT SCALE ILLUSTRATIONS.



EXISTING SITE

pearson
architecture studio
bobbi@pearson-studio.com
785 220 6898

DATE: 5 DECEMBER 2018

UNIFIED SCHOOL DISTRICT 434

OVERBROOK ATTENDANCE CENTER
202 WEST 7TH STREET
OVERBROOK, KANSAS 66524



GENERAL

G1.0

PROJECT 1806-01



1



2



3



4



5 NEW PARTITION SHALL COORDINATE WITH SUSPENDED CEILING & OVERHEAD EQUIPMENT



6

EXISTING CONDITIONS
N.T.S.

pearson
architecture studio
bobbi@pearson-studio.com
785 220 6898

DATE: 5 DECEMBER 2018
UNIFIED SCHOOL DISTRICT 434
OVERBROOK ATTENDANCE CENTER
202 WEST 7TH STREET
OVERBROOK, KANSAS 66524



PHOTOS
G2.0
PROJECT 1806-01



1



2



3



4 MAINTAIN EXISTING EXTERIOR STOREFRONT AND SECURITY CONTROLS

pearson
architecture studio
bobbi@pearson-studio.com
785 220 6898

DATE: 5 DECEMBER 2018
UNIFIED SCHOOL DISTRICT 434
OVERBROOK ATTENDANCE CENTER
202 WEST 7TH STREET
OVERBROOK, KANSAS 66524



EXISTING CONDITIONS
N.T.S.

PHOTOS
G2.1
PROJECT 1806-01

REMOVE EXISTING WINDOW
ASSEMBLY AND MASONRY ,
PREPARE FOR NEW RATED
DOOR & GLAZING ASSEMBLIES



DEMOLITION PLAN

1/4" = 1'-0"



DEMO PLAN

D1.0

PROJECT-1806-01

DATE: 5 DECEMBER 2018

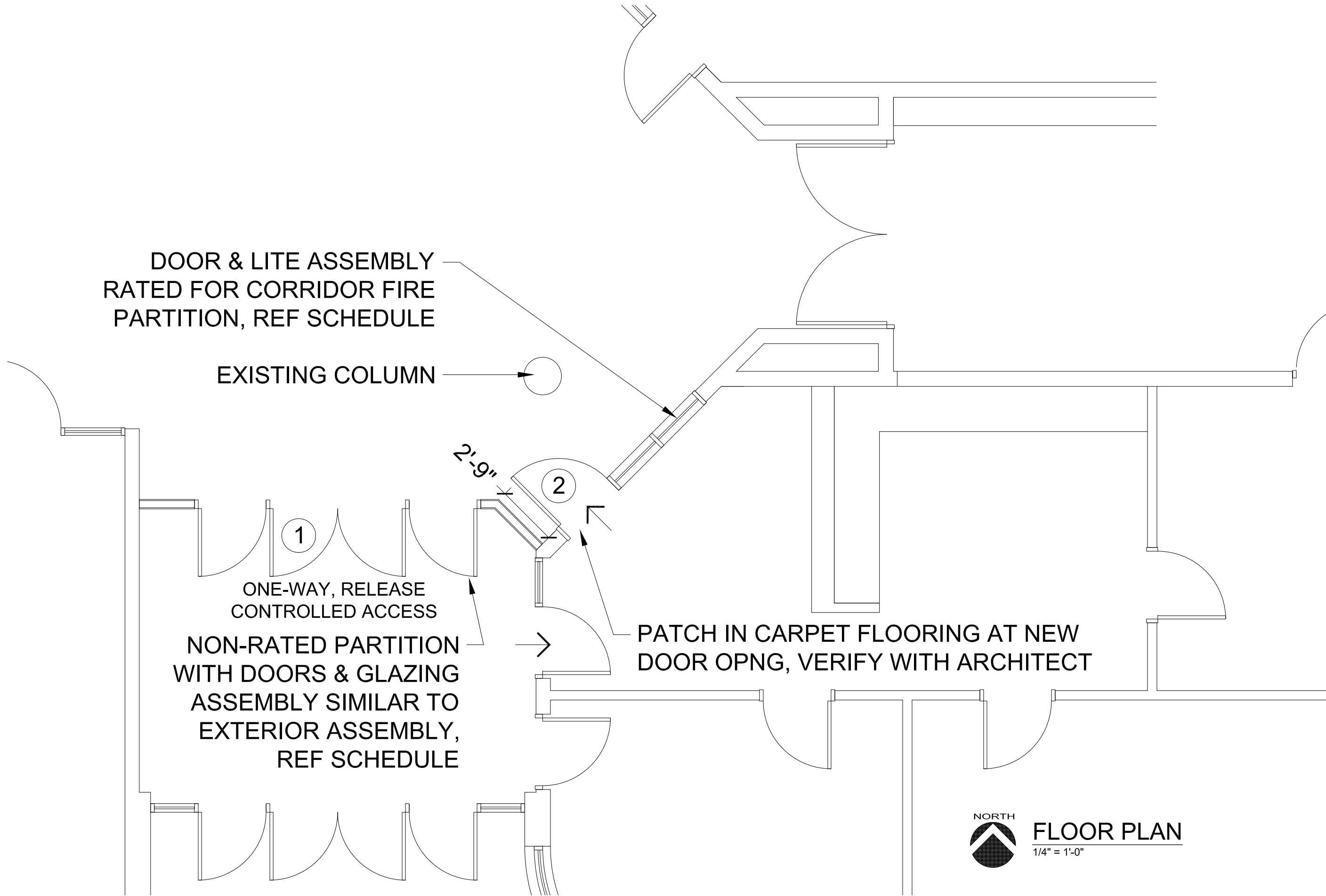
UNIFIED SCHOOL DISTRICT 434

OVERBROOK ATTENDANCE CENTER
202 WEST 7TH STREET
OVERBROOK, KANSAS 66524

pearson

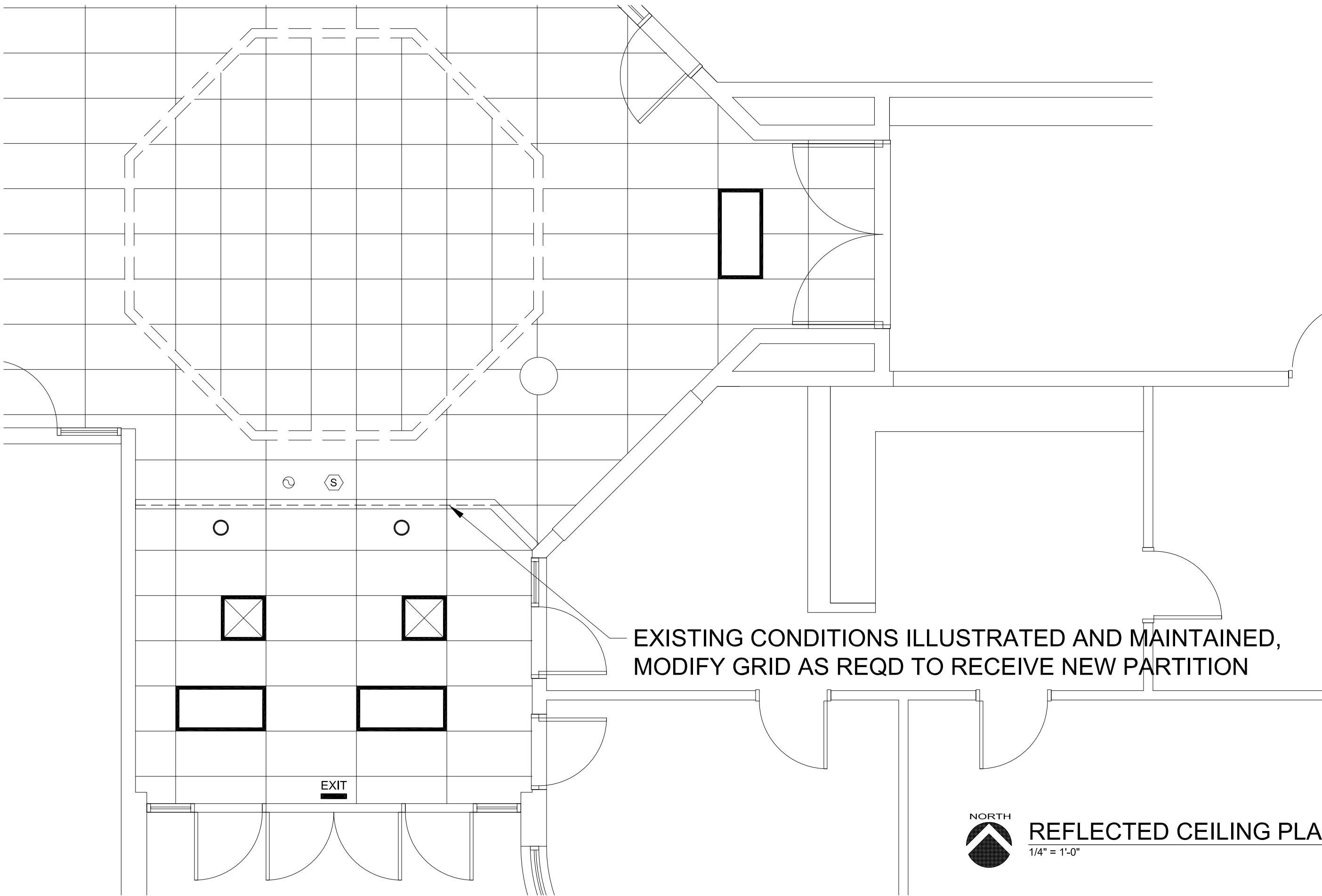
architecture studio

bobbi@pearson-studio.com
785 220 6898



FLOOR PLAN

1/4" = 1'-0"



EXISTING CONDITIONS ILLUSTRATED AND MAINTAINED,
 MODIFY GRID AS REQD TO RECEIVE NEW PARTITION



REFLECTED CEILING PLAN

1/4" = 1'-0"

pearson
 architecture studio
 bobbi@pearson-studio.com
 785 220 6898

DATE: 5 DECEMBER 2018

UNIFIED SCHOOL DISTRICT 434

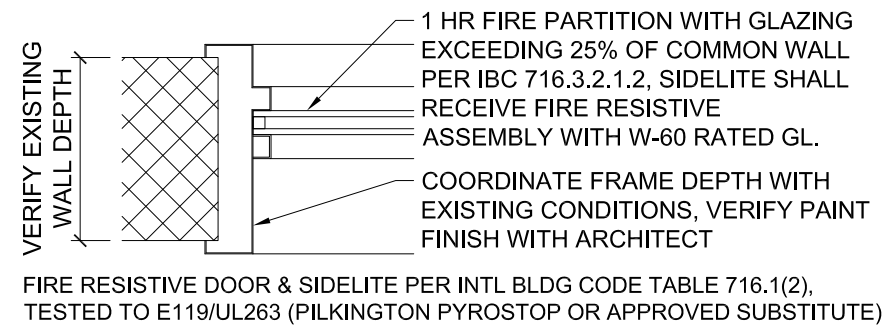
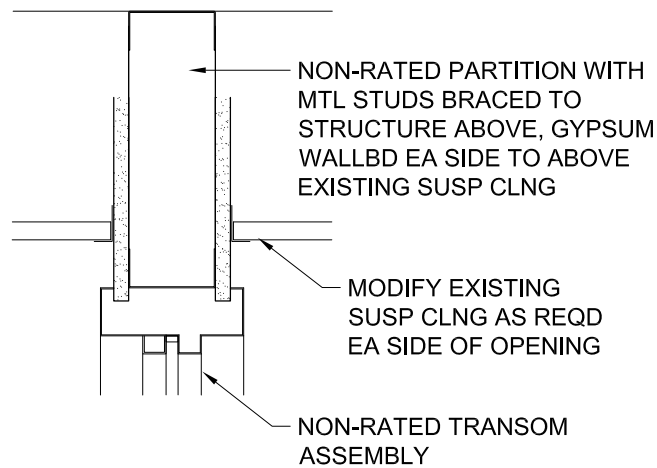
OVERBROOK ATTENDANCE CENTER
 202 WEST 7TH STREET
 OVERBROOK, KANSAS 66524



CEILING PLAN

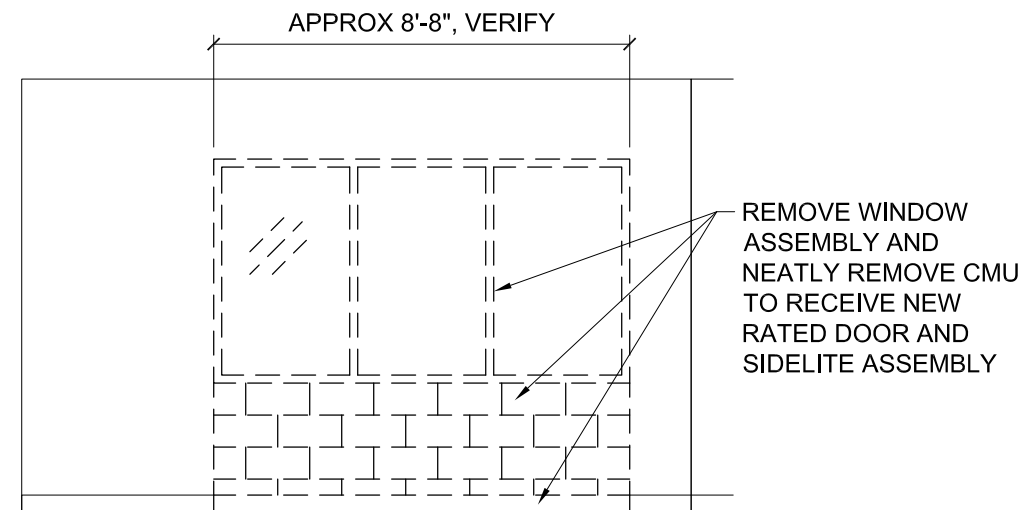
A2.0

PROJECT-1806-01



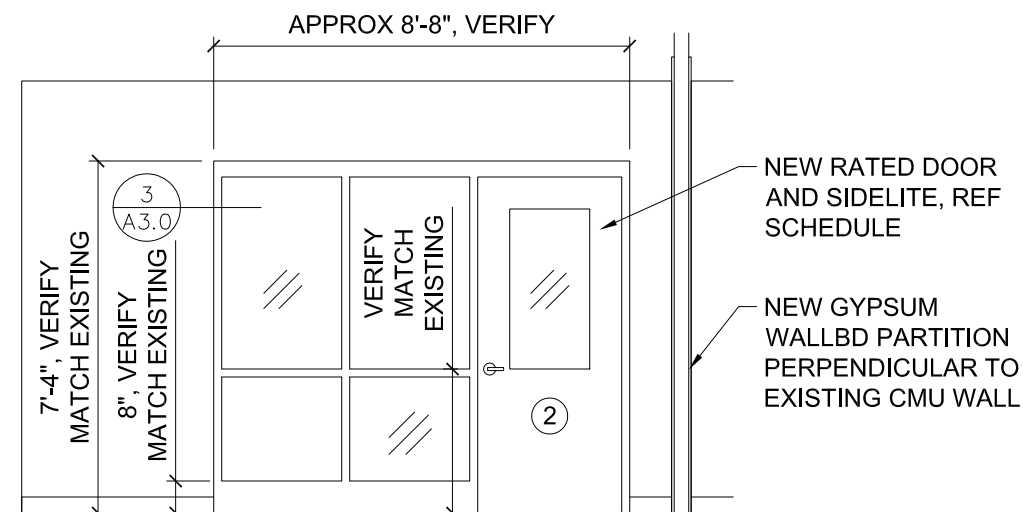
3 RATED SIDELITE - JAMB

1 1/2" = 1'-0" DOOR JAMB SIMILAR



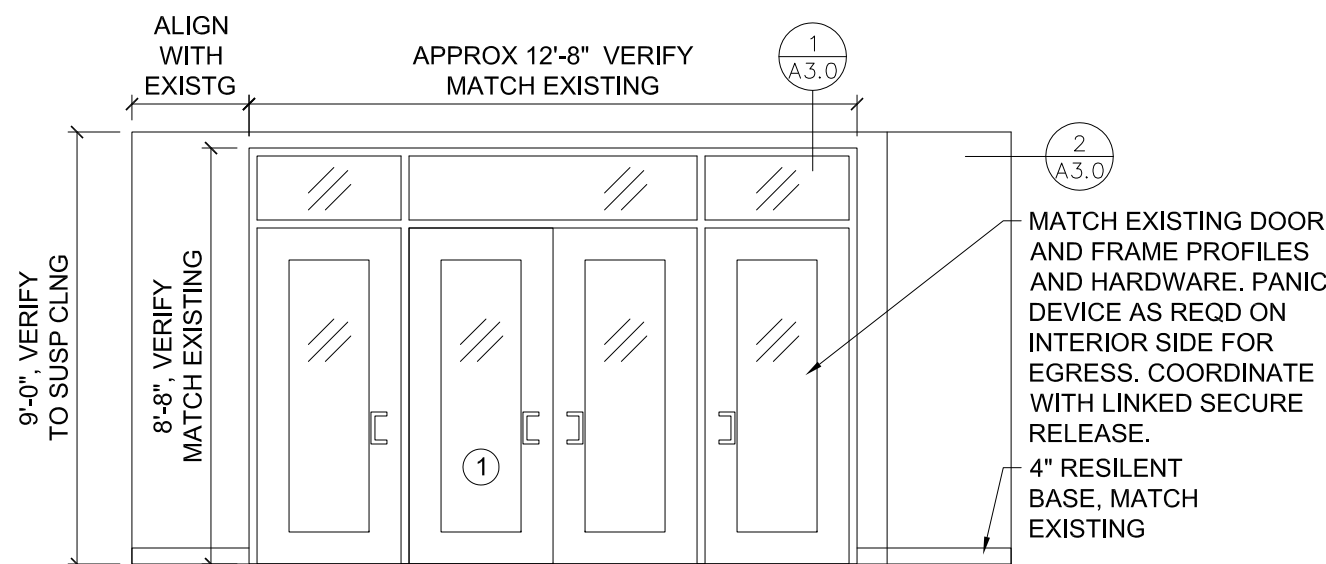
EXISTING - WINDOW & CMU

1/4" = 1'-0" PREPARE FOR NEW OPNG AT ADMIN OFFICE



NEW RATED ASSEMBLY

1/4" = 1'-0" NEW OPNG AT ADMIN OFFICE

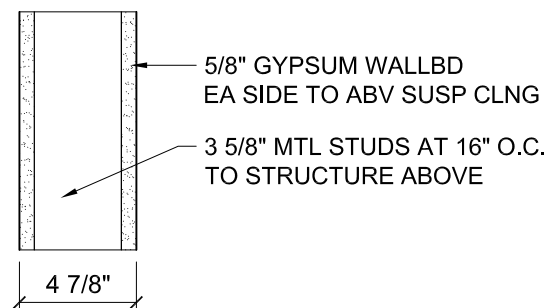


NEW INTERIOR PARTITION & OPENING ASSEMBLY

1/4" = 1'-0" NON-RATED GYPSUM WALLBD PARTITION WITH NON-RATED DOOR & TRANSOM ASSEMBLY

1 HOLLOW MTL ASSEMBLY

1 1/2" = 1'-0" NON-RATED PARTITION



2 INTERIOR PARTITION

1 1/2" = 1'-0" NON-RATED W/ BACKING

DOOR & FRAME SCHEDULE

DOORS						FRAMES			ASSEMBLY RATING	NOTES PANEL
DOOR #	WIDTH	HEIGHT	THICKNESS	MATL	FINISH	MATL	FINISH	DETAIL		
OAC 1	3-0 (x4)	7-0	1 3/4"	WOOD	STAIN	HM	PAINT	SHT A3.0	-	1
OAC 2	3-0	7-0	1 3/4"	WOOD	STAIN	HM	PAINT	SHT A3.0	REF NOTE	1, 2

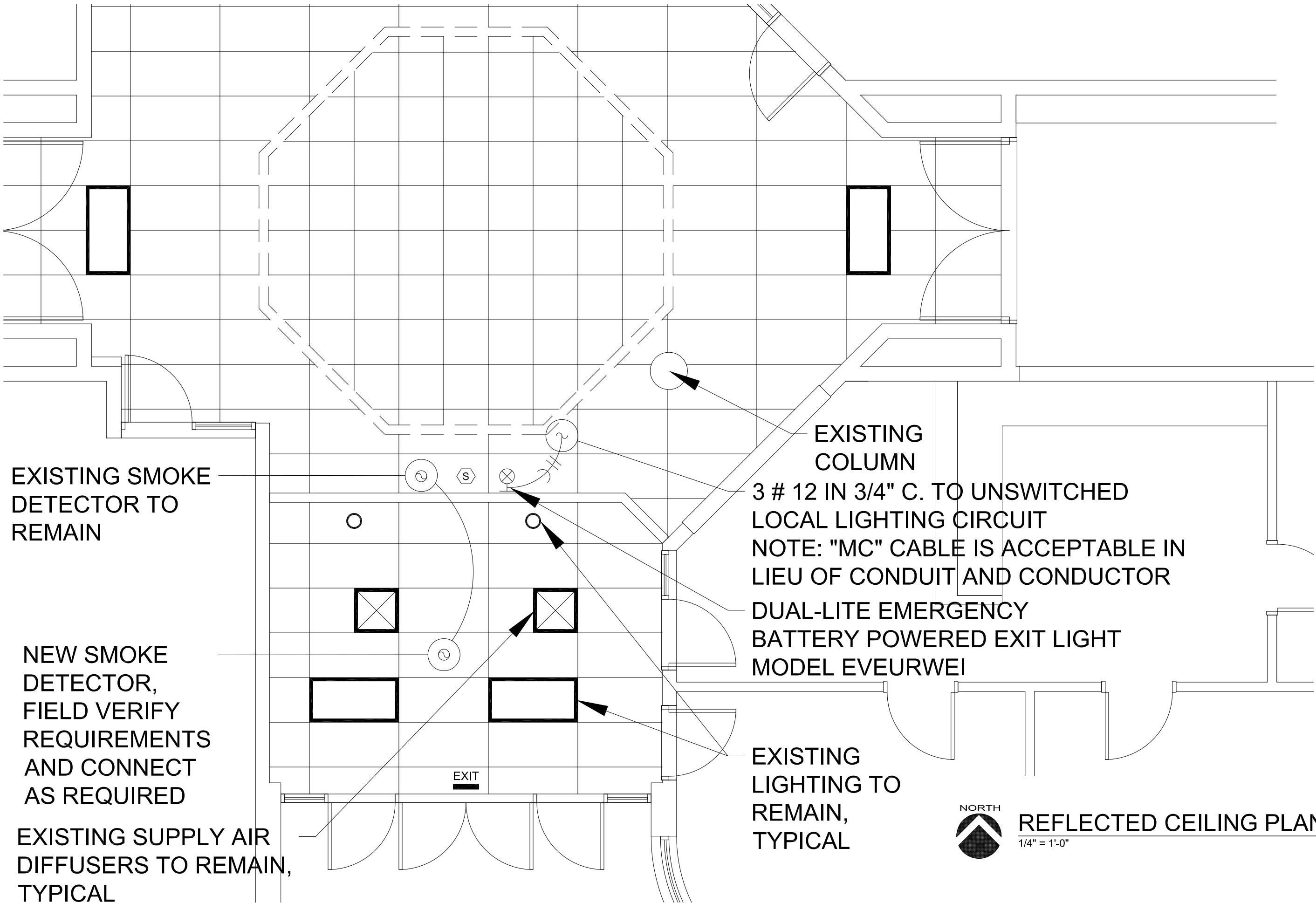
- NOTES:
- RESTRICTED ACCESS, COORDINATE WITH SECURITY CONTRACTOR
 - 20 MIN DOOR WITH 45 MIN SIDELITE DESIGNED FOR 1 HR CORRIDOR FIRE PARTITION PER IBC TABLE 716.1(2). DOOR MAY RECEIVE VISION PANEL PER NFPA 80 LABELED D-20, HOWEVER SIDELITE ASSEMBLY GLAZING EXCEEDS AREA LIMITS PER IBC 716.3.2.1.2, SO SIDELITE SHALL RECEIVE W-60 FIRE RESISTIVE LABEL GLAZING TO ASTM E119

pearson
architecture studio
bobbi@pearson-studio.com
785 220 6898

DATE: 5 DECEMBER 2018
UNIFIED SCHOOL DISTRICT 434
OVERBROOK ATTENDANCE CENTER
202 WEST 7TH STREET
OVERBROOK, KANSAS 66524



DETAILS
A3.0
PROJECT-1806-01



EXISTING SMOKE
DETECTOR TO
REMAIN

NEW SMOKE
DETECTOR,
FIELD VERIFY
REQUIREMENTS
AND CONNECT
AS REQUIRED

EXISTING SUPPLY AIR
DIFFUSERS TO REMAIN,
TYPICAL

EXISTING
COLUMN

3 # 12 IN 3/4" C. TO UNSWITCHED
LOCAL LIGHTING CIRCUIT
NOTE: "MC" CABLE IS ACCEPTABLE IN
LIEU OF CONDUIT AND CONDUCTOR

DUAL-LITE EMERGENCY
BATTERY POWERED EXIT LIGHT
MODEL EVEURWEI

EXISTING
LIGHTING TO
REMAIN,
TYPICAL



REFLECTED CEILING PLAN

1/4" = 1'-0"

DATE: 2 DECEMBER 2018

UNIFIED SCHOOL DISTRICT 434

OVERBROOK ATTENDANCE CENTER
202 WEST 7TH STREET
OVERBROOK, KANSAS 66524

pearson
architecture studio
bobbi@pearson-studio.com
785 220 6898



ELECT - CEILING

E1.0

PROJECT-1806-01